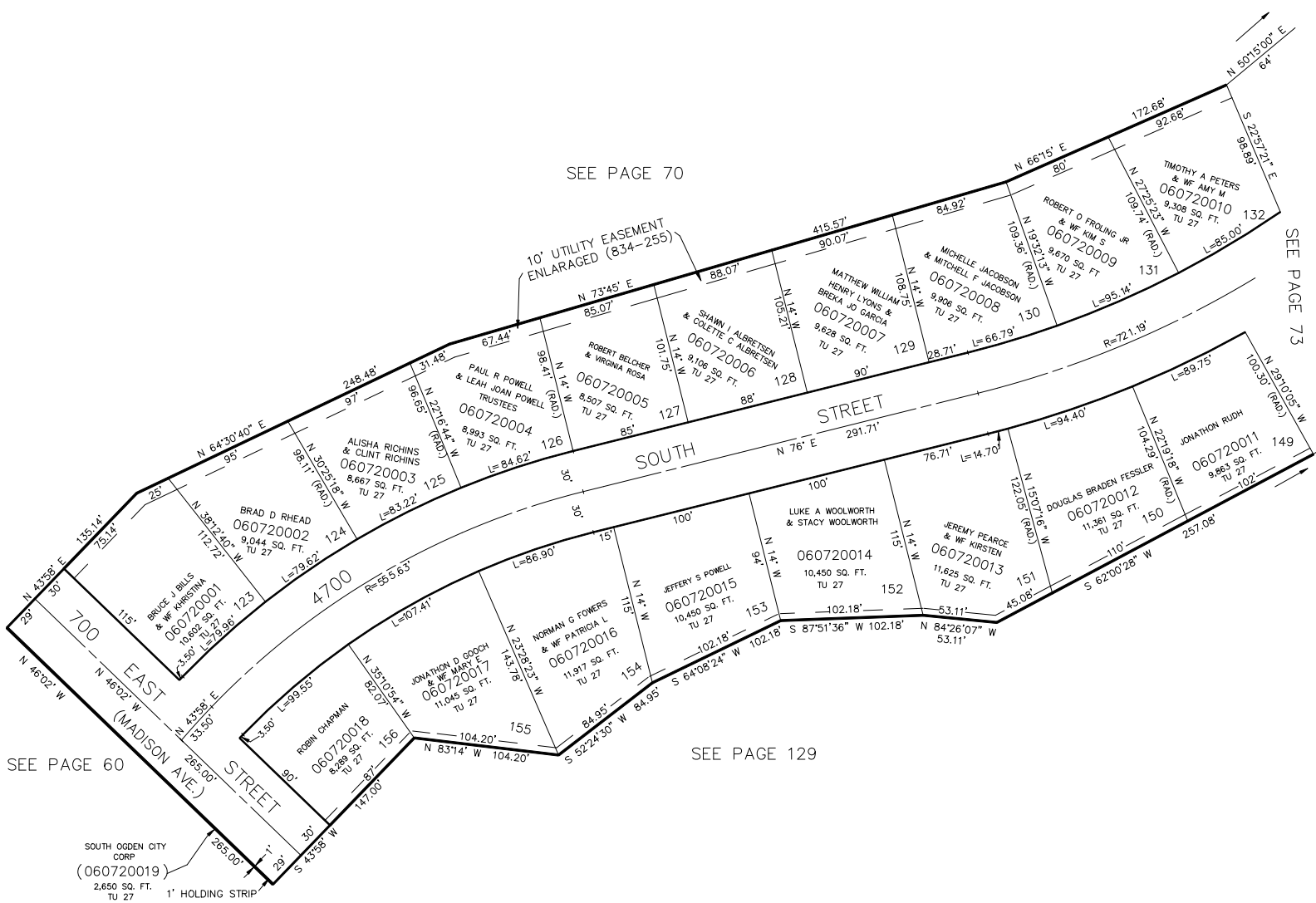


PART OF THE SE.1/4, SEC. 9, T.5N., R.1W., S.L.B. & M.  
**SOUTH HEIGHTS ADDITION NO.2 SUBDIVISION**  
 LOTS 123 TO 132 & 149 TO 156

TAXING UNIT: 27

IN SOUTH OGDEN CITY

SCALE 1" = 60'



FOR COMPLETE ENG DATA SEE  
 ORIGINAL DEDICATION PLAT IN  
 BOOK 15, PAGE 26 OF RECORDS.